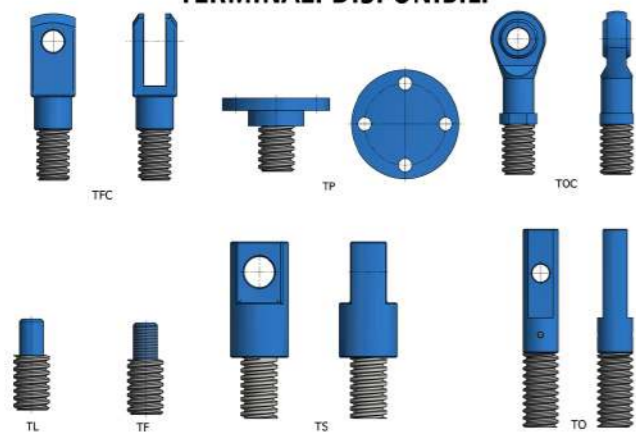
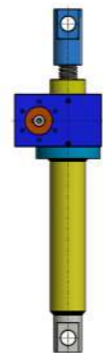




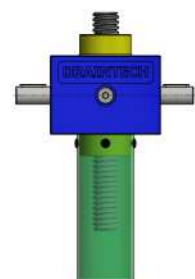
END FITTINGS TERMINALI DISPONIBILI



PO RIGID ROCKING PROTECTION PROTEZIONE RIGIDA OSCILLANTE



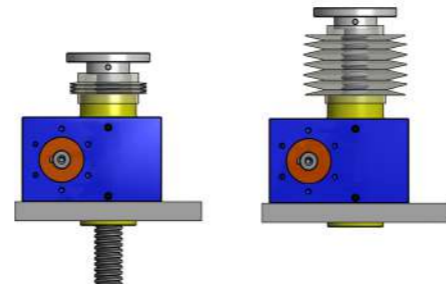
COVER PIPE PROTEZIONE RIGIDA



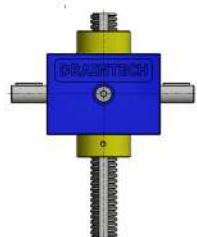
STOP NUT BOCCOLA ANTISFILAMENTO



BELLOWS BOOT PROTEZIONE ELASTICA



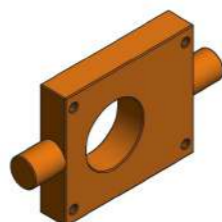
AR-ARD ANTI ROTATION ANTIROTAZIONE



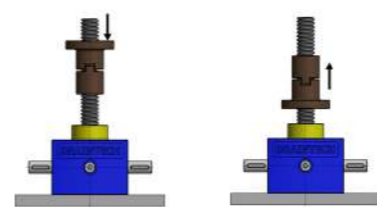
RGT/RGR BACKLASH RECOVERY DEVICE ASSIEME RECUPERO GIOCO



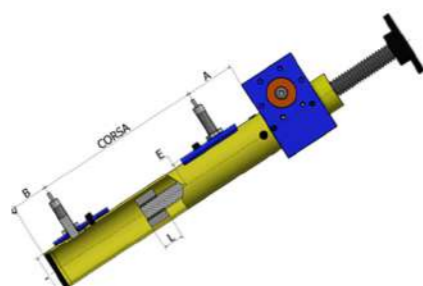
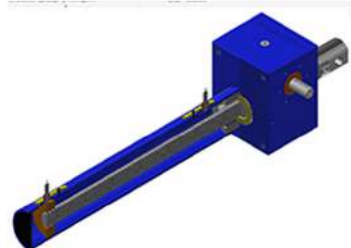
FCO TRUNNION FLANGIA PER CASSA OSCILLANTE



CS SAFETY NUT AND WEARING NUT CHIOCCIOLA DI SICUREZZA E CONTROLLO USURA



FC LIMIT SWITCH PREPARED FINE CORSA



DHT VF VR BALLSCREW JACKS MARTINETTI CON VITE E CHIOCCIOLA A RICIRCOLO DI SFERE



MARTINETTI MECCANICI SCREWJACKS

SCREW JACKS MARTINETTI

MAIN FEATURES CARATTERISTICHE GENERALI



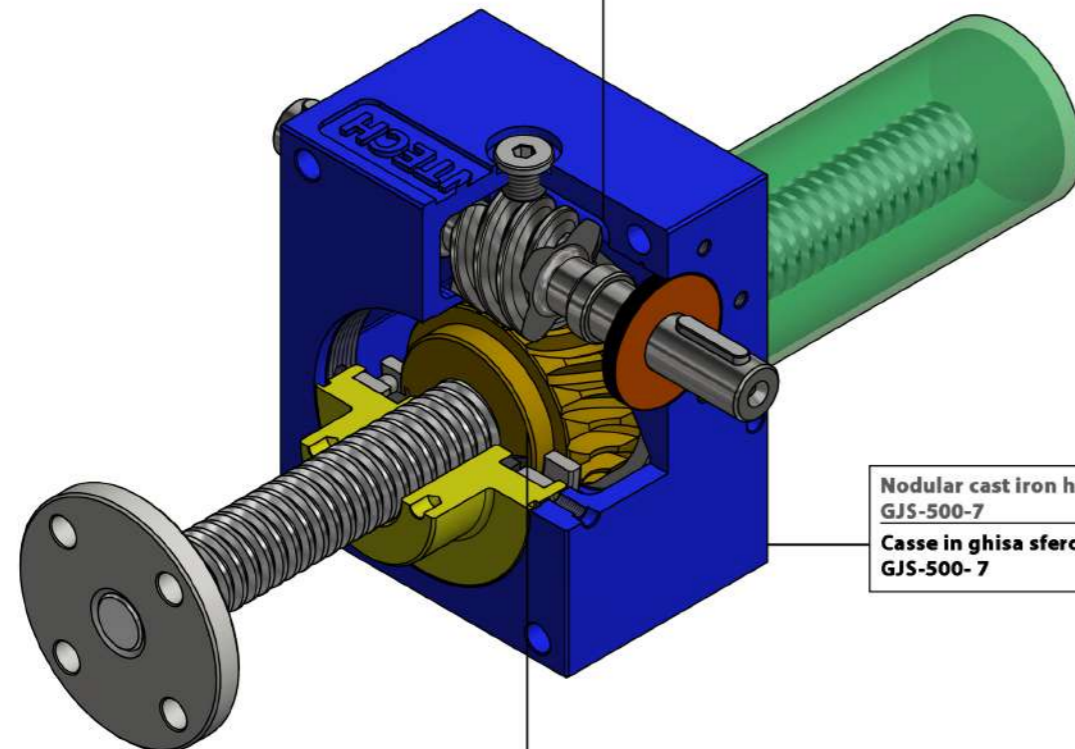
The new family of mechanical screw jacks we named **DHT**, it is a product whose modularity and performance have been developed towards the highest levels

The company's know-how in the designing and manufacturing of worm wheel and worm screws allowed us optimization of gear profiles optimizing the gear profiles, maximizing strength capacity, efficiency and gear sets lifetime.

DHT is a full made in Italy product. Material, accuracy and quality class of the components we use set these screw jacks to the highest standard available on the market.

La nuova serie di martinetti a vite trapezia o con vite a ricircolo di sfere DRAINTECH, denominata **DHT**, è un prodotto la cui modularità è stata spinta all'estremo unitamente alle sue prestazioni. Il know-how aziendale nella progettazione e nella costruzione di ruote dentate e viti senza fine ci ha permesso di ottimizzare i profili dell'ingranaggio ruota per vite senza fine e vite senza fine, massimizzando i rendimenti di ingranamento, la durata e la resistenza degli ingranaggi. Il prodotto è rigorosamente made in Italy e l'impiego di materiali lo posiziona ai più alti standard qualitativi disponibili sul mercato.

Worm screw made of carburising steel and case hardened ground to Z1 shape
Viti senza fine in 18 NiCrMo5 cementate e temprate con profili rettificati tipo Z1

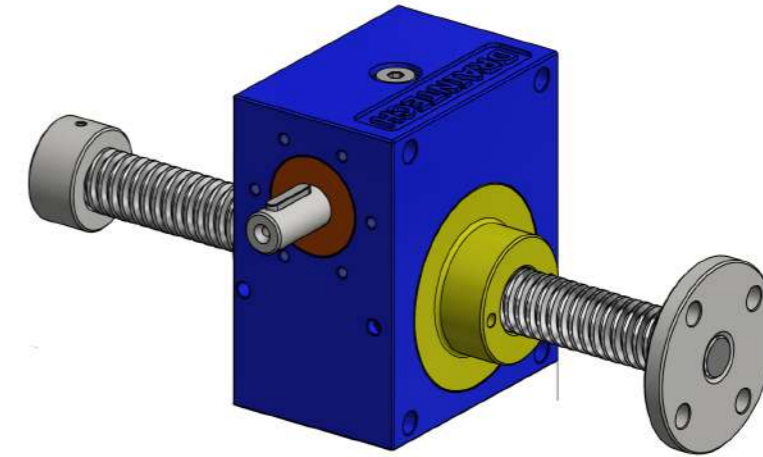


Nodular cast iron housing
GJS-500-7
Casse in ghisa sferoidale
GJS-500-7

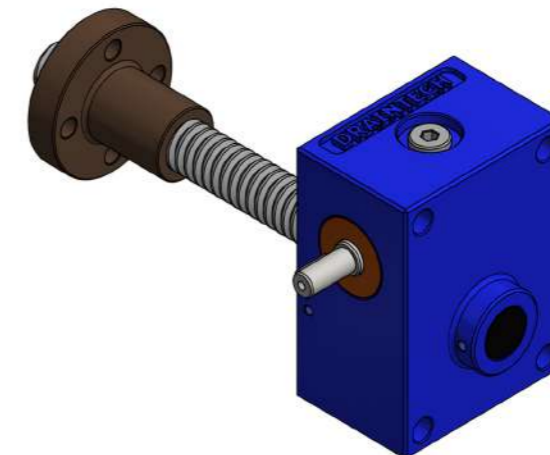
Worm wheel in bronze G-CuSn-12
Corone in bronzo G-CuSn-12

CAPACITY RANGE from 500 daN to 60.000 daN GAMMA da 500 daN a 60.000 daN

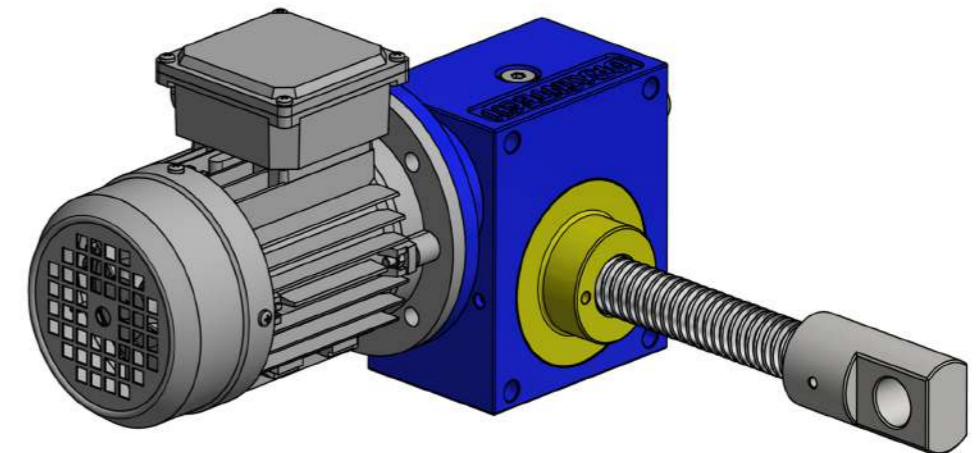
TRASLATING
TRASLANTE



ROTATING
ROTANTE



MOTOR MOUNT
MOTORIZZATO



MAX CAPACITY CAPACITA' DI CARICO STATICO	
DHT183/184	500 daN
DHT 204	1000 daN
DHT 306	2500 daN
DHT 407	5000 daN
DHT 559	10.000 daN
DHT 609	15.000 daN
DHT 7010	20.000 daN
DHT 8010	25.000 daN
DHT 9010	35.000 daN
DHT 12014	60.000 daN